

# Community Pharmacy Leicestershire & Rutland

## REGIONAL & LOCAL NEWS

### Happy 1st Anniversary

On Friday 31st Jan we celebrated the 1 year anniversary since the launch of the Pharmacy First Service. The rollout of Pharmacy First was a significant moment for pharmacy, primary care and the wider NHS. The commitment to expand services in this way was a substantial commitment in our primary care access recovery plan and the NHS is delivering on our promise.

We are grateful for your continued dedication to the NHS as, together, we deliver innovative and new services for our patients and the public



# Think Pharmacy First

Think Pharmacy First.



**SAFEGUARDING**  
(Protecting babies and children  
from harm) webinar.

**SAVE THE DATE:**

**6th February 2025 at 7:30pm**

We will be hosting a Safeguarding webinar.  
We have partnered with LLR ICB and ICON  
to deliver this event.

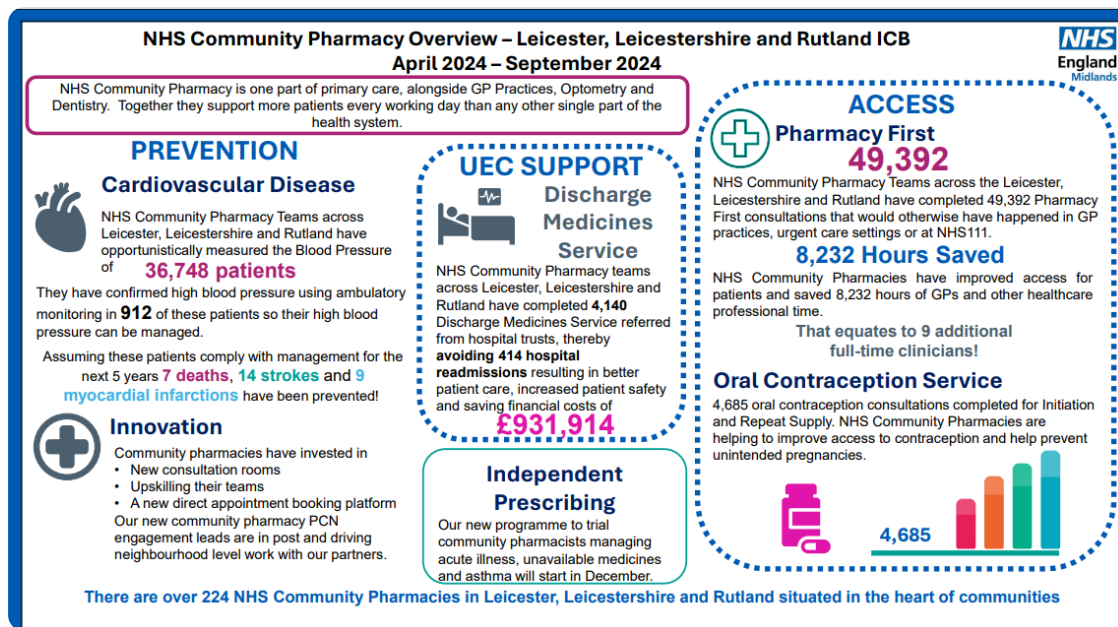
*New!*

## Safeguarding Webinar

**6th February 2025  
7:30pm with ICON**

**SAVE THE DATE!**

We will be hosting our first Safeguarding webinar (protecting babies and children from harm). This webinar is in partnership with ICON.



## Pharmacy First- One year on

NHS Community Pharmacy Teams across the Leicester, Leicestershire and Rutland have completed over 49,392 Pharmacy First consultations that would otherwise have happened in GP practices, urgent care settings or at NHS111. This means LLR NHS Community Pharmacies have improved access for patients and saved 8,232 hours of GPs and other healthcare professional time!

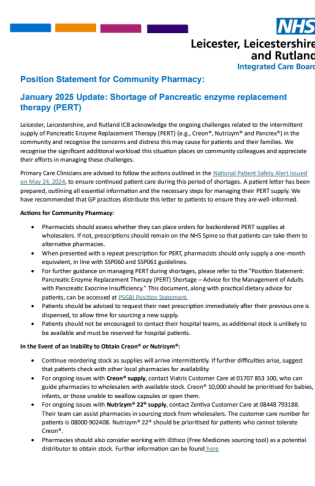
Whilst we are cognisant of challenges around the service, we would like to take a moment to say thank you. Thank you to all the LLR pharmacy teams supporting and championing the Pharmacy Service and for your great contribution to patient care.

[More Information](#)



### Join the Shared Care Records Initiative in LLR

For the first time LLR community pharmacies have the opportunity to access to the patient's LLR Care Records



### January 2025 Update: Shortage of Pancreatic



### Expressions of Interest ("EOI") for the provision of Pharmacy Services (Leicestershire and County Council)

Leicestershire County Council and Rutland County Council invites EOIs for the provision of Pharmacy Services, split

(CRs). LLR CR's are different from summary care records. The purpose of this initiative is to bring together a person's separate records into a single read-only portal. To register your interest email [chiefofficer@leics-lpc.co.uk](mailto:chiefofficer@leics-lpc.co.uk)

[READ HERE](#)

### enzyme replacement therapy (PERT)

Position statement for CP was emailed on 31st Jan 2025 on behalf of ICB. Primary Care Clinicians are advised to follow the actions outlined in the National Patient Safety Alert issued on May 24, 2024.

[VIEW HERE](#)

into 3 areas:

- Lot 1: Provision of Free Emergency Hormonal Contraception (EHC)
- Lot 2: Provision of Smoking Cessation Nicotine Replacement Therapy
- Lot 3: Provision of Leicestershire County Council Staff Flu Vaccinations

[INFO](#)

## February 2025 COMMUNITY PHARMACY DEADLINE TRACKER

Please see the link for this months deadline tracker [HERE](#)

### [Monthly Deadline Tracker](#)

To help keep pharmacy teams on track with monthly tasks, quality payments and to meet local and national deadlines. View the latest monthly Community Pharmacy Deadline Tracker here.

[Read More](#)

### Post Payment Verification (PPV)

The NHS Business Services Authority, Pharmacy Provider Assurance Team (PAT) have been requested by NHS England (NHSE) to undertake a Post Payment Verification (PPV) exercise across various services currently being provided within community pharmacy settings.

Provision of the data requested is mandatory, as part of the Terms of Service. The East Midlands Primary Care Team (EMPCT) encourages pharmacy owners to engage with the PPV process in a timely manner to avoid any escalation to their Integrated Care Board commissioner for a potential breach of their Terms of Service.

If providers have any queries or concerns regarding PPV please contact the NHSBSA via email [pharmacysupport@nhsbsa.nhs.uk](mailto:pharmacysupport@nhsbsa.nhs.uk) or call on 0300 330 1295.

NHSBSA phone lines are open Monday to Friday, 8.30am to 4.30pm.

Further information regarding PPV can also be found via the following link <https://www.nhsbsa.nhs.uk/provider-assurance-pharmaceutical-services>

*Kind Regards*

*Di Wells* (Senior Commissioning Manager – Pharmacy, Optometry and Dental)

**National News**



*New!*

### **Pharmacy Pressures Survey 2025: It's time to share your views**

Community Pharmacy England has launched its fourth annual Pressures Survey. Complete the surveys

- [Pharmacy Owners](#)
- [Pharmacy Team](#)

The surveys are as short as possible, taking around 10-15 minutes to complete. They will remain open until **23.59 on 28th February 2025.**



### **Funding and Reimbursement**

As part of our [Funding & Reimbursement Shorts](#) series Community Pharmacy England's in-house Drug Tariff and funding experts have created a new video providing guidance on how handling 'FS' endorsed prescriptions for free supply of sexual health treatments.

In our latest video, Mitesh Bhudia and Gemma Hackett from our Dispensing and Supply Team, discuss the topic of 'FS' endorsed prescriptions, including:

- Which treatments are covered by the 'FS' endorsement;
- How prescribers should apply the 'FS' endorsement to prescriptions;
- Dispensing and claiming for prescriptions with 'FS' endorsed items; and
- Correct submission of prescriptions with 'FS' endorsed items.

[READ MORE](#)



**Community Pharmacy  
Leicestershire & Rutland  
(CPL&R)**

**Unit B24, 111 Ross Walk,  
Leicester  
LE4 5HH**

**[admin@leics-lpc.co.uk](mailto:admin@leics-lpc.co.uk)**

You received this email because you are registered with LPC

[Unsubscribe here](#)

